

SS CONTROLS ENVIRONMENT MONITORING INSTRUMENTS

THERMAL IMAGING CAMERA

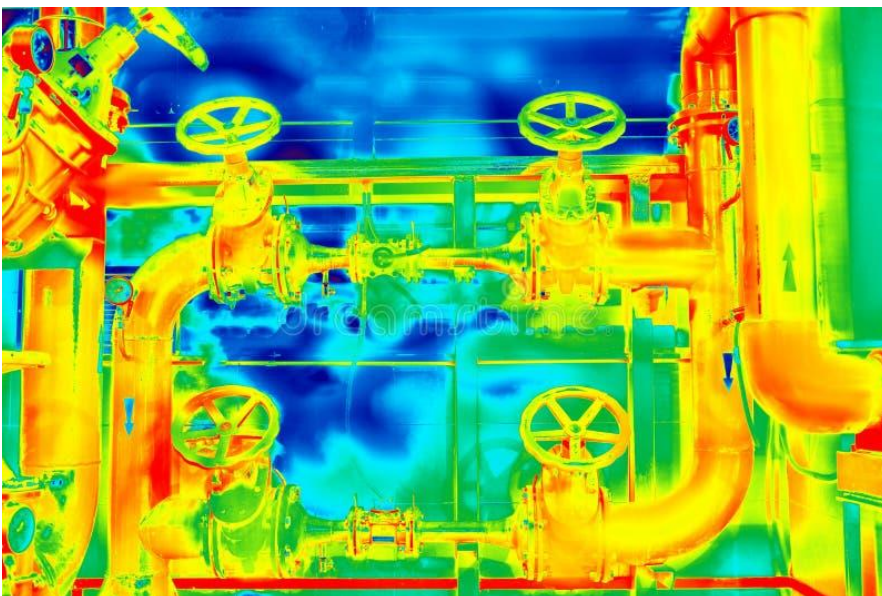
IR-894 THERMAL IMAGER

Thermal imaging utilises infrared technology to detect heat emissions from various objects. This process converts the infrared energy, which is invisible to the human eye, into a visible light display. The infrared energy, or thermal energy, is emitted by all objects above absolute zero temperature, and the variations in these emissions form the basis of thermal imaging.

By providing a clear picture of thermal anomalies, it helps in early detection of potential problems, maximizing operational efficiency, safety, and cost savings

Applications: Electric Power, Metallurgy, petro-chemical, machinery, coal, traffic, fire control, defense, HVAC, water & gas leakages, human/ animal presence, etc

Thermal Image



Features

- *TFT display screen
- *Select the key / entry key
- *Power / Menu Key
- *Up/Down/Left/Right Key
- *Battery cover
- *Trigger (Image / video capture key)
- *LED lighting
- *Visible light camera
- *Infrared thermal image sensor
- *MicroUSB Interface

Thermal Camera



PRODUCT SPECIFICATIONS

Model		
Infrared Image resolution	120 × 90	160 × 120
Field angle	26° × 19°	35° × 27°
Image PC offline analysis	N/A	Support
Infrared detector type	Vanadium oxide is uncooled in the infrared focal plane	
Frame rate of thermal images	≤25Hz	
Pixel size	12 μm	
NETD	≤50K @25°C, @F/1.1	
Shortest focus length	3.2mm	
IFOV	3.75mrad	
Wavelength coverage	8-14μm	
Focus mode	Fixed	
Temperature measurement range	-20°C to 550°C (-4°F to 1022°F)	
Temperature measurement accuracy	±2%; ±2°C (3.6°F) or of reading	
Resolution	0.1°C	
Temperature measurement mode	Center point / cold hot spot tracking	
Color palette	Rainbow, Iron oxide red, cold color, black & white, white & black	
Emissivity	Adjustable from 0.01 to 1.00	
Visible light image resolution	300000 pixels	
Display Screen	2.8" TFT color display	
Image display mode	Infrared/visible/dual light fusion	
Lighting supplement	LED lighting supplement	
Storage capacity	Built-in 4G eMMC (about 3G storage space available to the user)	
Store the image/ video formats	JPG/MP4	
Image / video export mode	USB connection PC export	
Menu Language	Chinese, English, German, Italian	
Battery	18650 battery (Size: 18.5×69mm)	
Battery Capacity	2000mAh	
Working time	2-3 Hours	
Power interface	Micro USB	
Automatic power off	Selectable: 5 minutes/20 minutes/ not power off automatically	
Work temperature	-10°C to 50°C / -14°F to 122°F	
Storage temperature	-20°C to 60°C / -4°F to 140°F	
Relative humidity	10% to 85% RH (non-condensing)	
Weight	389g	
Size	96mm×72mm×226mm	

CONTACT US!

 Plot 17973 [Hamtsukunu Rd](#), Gaborone West Industrial

 [SS Controls Botswana](#)

 [sscontrols_bw](#)

 info@sscontrols.co.bw

 +267 311 1937/ 7370 3030



SS CONTROLS
BOTSWANA
The Safety Of Things