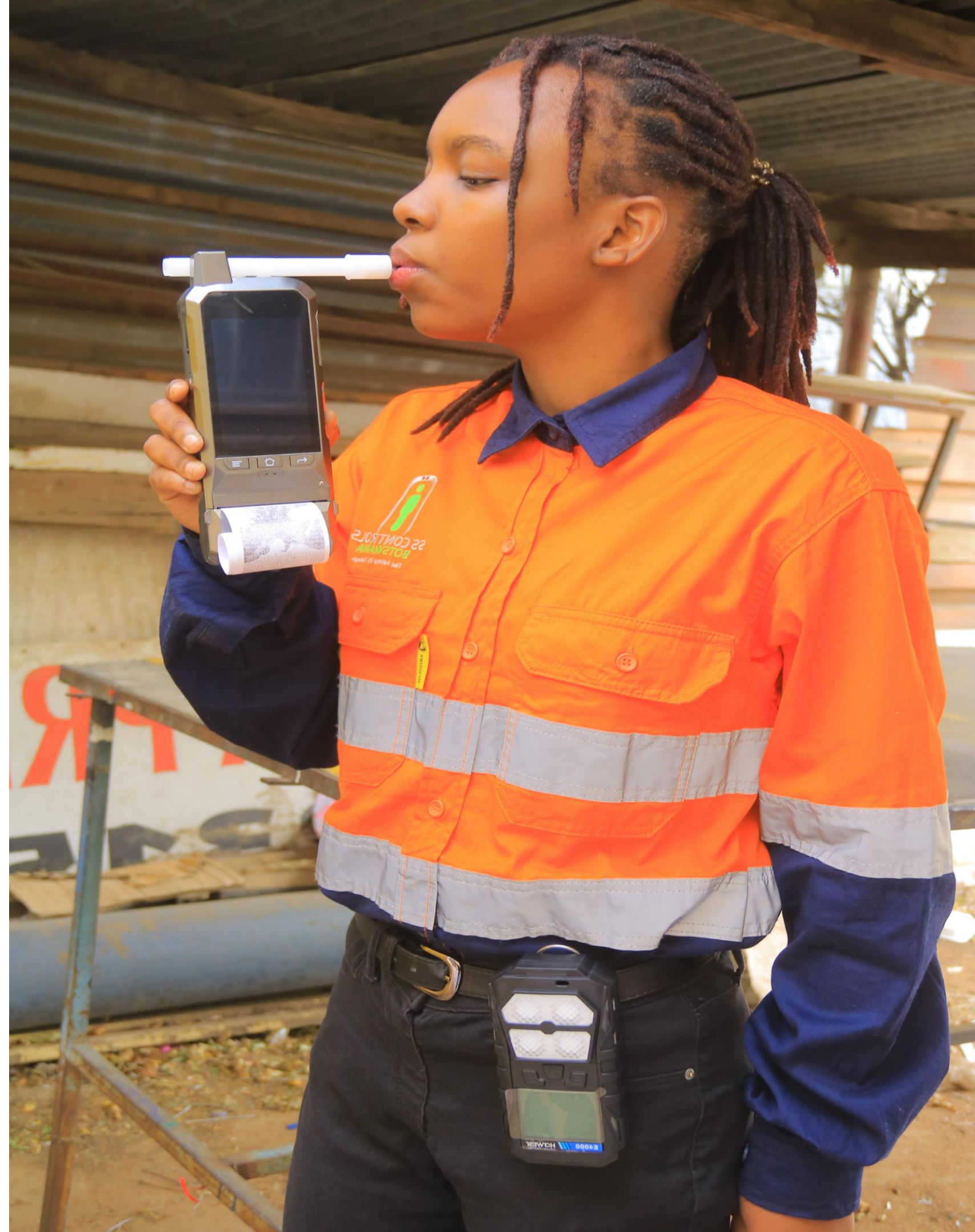


**SS CONTROLS**  
**BOTSWANA**  
*The Safety Of Things*

SS Controls (Pty) Ltd t/a  
SS Controls Botswana

## Company Profile

Gas Detection Systems  
Environment Monitoring  
Alcohol Breathalysers  
UG Mining Equipment  
Equipment Calibration



## SS CONTROLS (PTY) LTD t/a SS CONTROLS BOTSWANA



- Operating Since 2016
- 100% citizen owned company
- Staff Compliment 100% Batswana
- Products: Surface and Underground Mining Safety Equipment.
- Services: Calibration, Equipment Maintenance, Systems, Integration & End-user Training

# COMPANY OVERVIEW

SS Controls (Pty) Ltd is a citizen-owned company led by a management team committed to promoting “A Safe and Secure Nation.” We view our efforts as crucial in enhancing front-line safety of both assets and personnel in the work environment.

We specialise in the procurement, maintenance, and calibration of equipment tailored for Safety Sensitive environments and meticulously select products to offer comprehensive solutions that integrate existing safety controls with cutting-edge systems.

Our product range is designed to improve workplace safety and includes Alcohol Breathalysers, Environment Monitoring Equipment, Gas Detection Systems, Asset Management Systems, and Mining Safety Equipment. Additionally, we provide services such as equipment calibration, gas cylinder refilling, system integration, and product training to ensure optimal performance and safety.

# SS CONTROLS BIOGRAPHY

Established in 2014, SS Controls initially focused on serving mining companies by providing top-tier Safety and Security Equipment. Over the years, we have expanded our services to various industries, and today, we proudly serve over 70 clients in both the Private Sector and Government.

We have forged strategic partnerships exclusively with Original Equipment Manufacturers (OEMs) to ensure unparalleled product support and after-sales services. This partnership guarantees a seamless supply chain for products, services, and training. In the next five years, we aim to localise the production and assembly of certain products, thereby creating job opportunities. Our local calibration services have been a testament to this commitment as we service our equipment in-house.

Backed by a dedicated team of engineers, technicians, and accountants, SS Controls has positioned itself as a key player in the market, offering direct services required by our clients.

# COMPANY CORE VALUES

## VISION

A “SAFE & SECURE NATION” We Strive to introduce the latest technology in Precision Testing & Safety equipment, protecting both personnel and assets from risks associated with harm and loss.

## MISSION

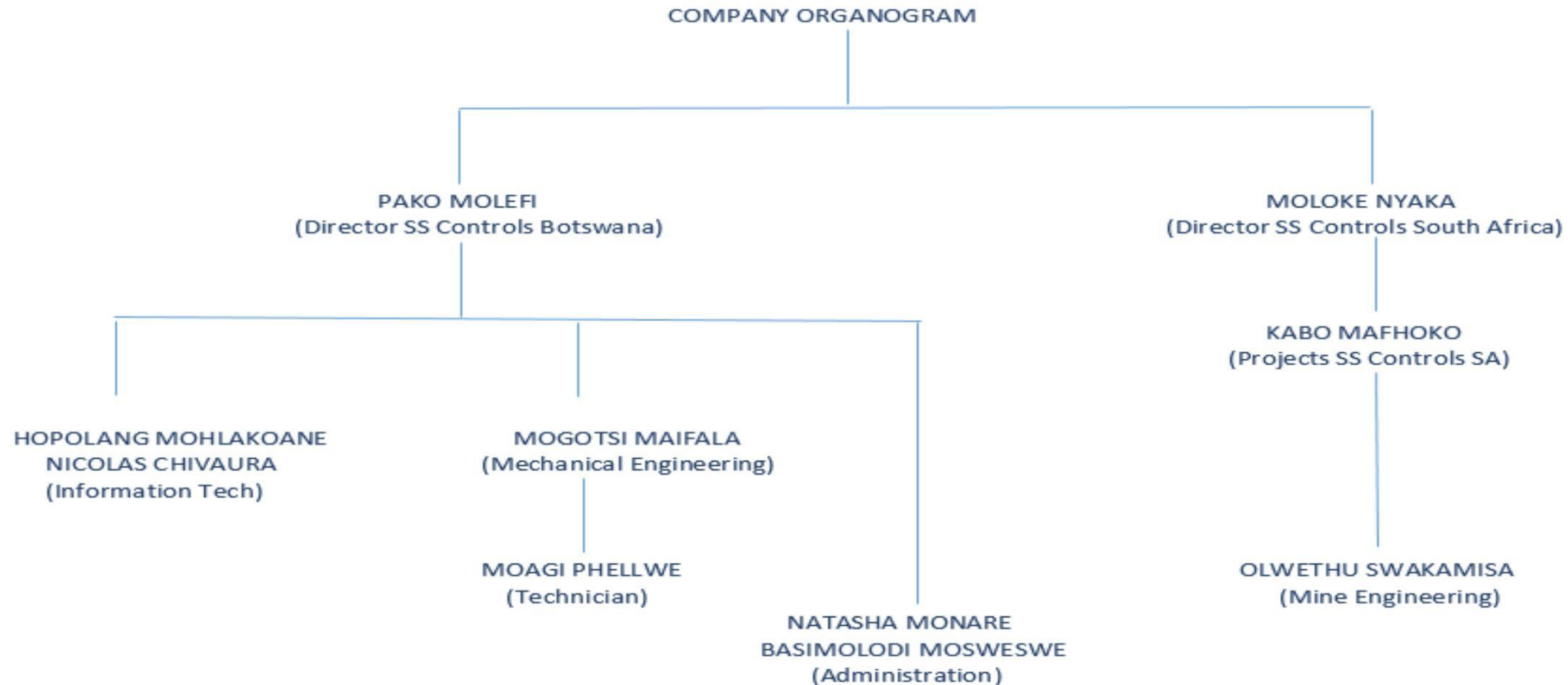
“GROWTH is our COMMITMENT” With Quality Assurance and Service Delivery as our guiding principle, and to respond to our national and regional interests of growth, we are steering towards Manufacturing, Assembly and Export of our mainstream products.

## ETHICS

At SS Controls, we believe in moral values and integrity. We accept that there is no shortcut to quality and professional service. We do not compromise on professional conduct and abide by ethics governed by local and international standards. Our management and staff restrain themselves from any conduct that might discredit the integrity of the company.

# OUR TEAM

SS Controls (Pty) Ltd has a team of young and passionate professionals in engineering, accounting, administration and business development. With the combination of experienced as well as a young and energetic team, we invest much effort on Research and Development in order to align ourselves with the 4th Industrial Revolution that focuses on Safety Detection Systems.

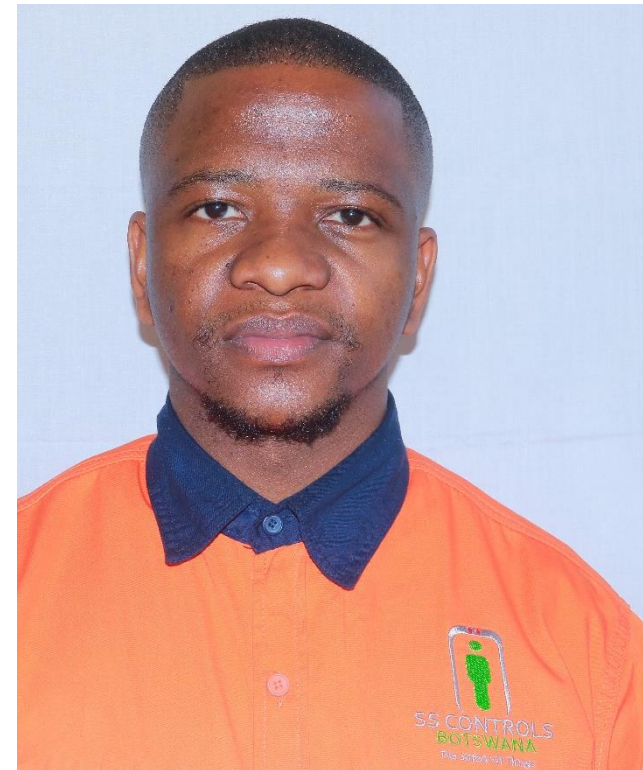


# KEY PERSONNEL-SS Controls BW



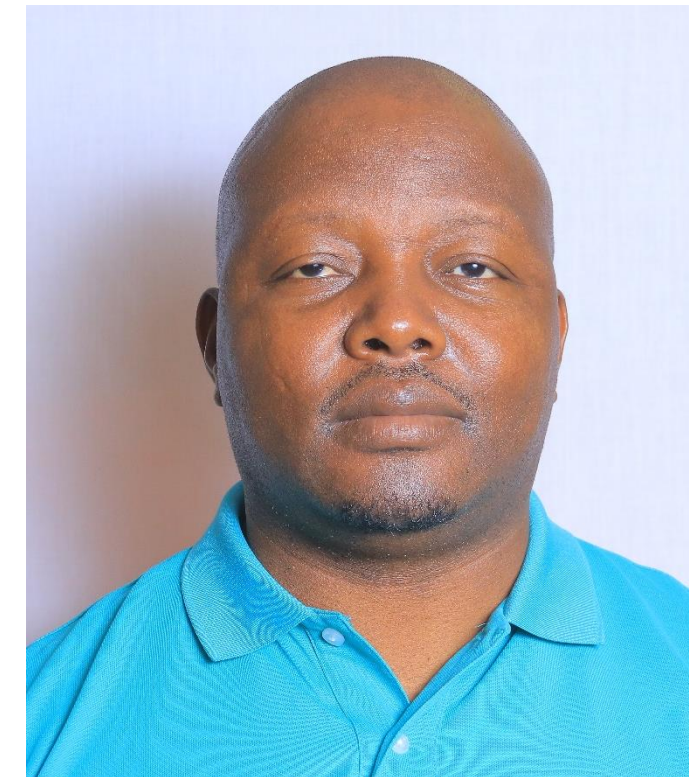
PAKO MOLEFI

Managing Director



MOGOTSI MAIFALA

Mechanical & Calibration  
Engineering




HOPOLANG MOHLAKOANE

IT & Systems Technology



NATASHA MONARE

Sales & Marketing



INDUSTRIES  
WE  
SERVICE

## OVER 70 COMPANIES & COUNTING...

- **MINING COMPANIES:** Mupane Gold Mine, Lucara Botswana, PNR Botswana, Morupule Mine, Botash, MP Mining, Tshukudu Metals
- **GOVERNMENT/ PARASTATALS:** Botswana Meat Commission, Botswana Railways, Botswana Post, Botswana Couriers
- **MANUFACTURING:** KBL/ AB-Inbev, Coca Cola, Makoro Brick, Nampak
- **DEPOTS & DISTRIBUTORS:** Puma Energy, Air Liquide, Ngami Oil, Kwa-Nokeng Oil, Tswana Gas, Gabcon



# OUR SERVICES

**EQUIPMENT CALIBRATION-** We provide equipment calibration on our safety equipment as according to industry calibration standards.

**REPAIRS & MAINTENANCE-** Critical to our services are our after-sales repairs and maintenance support. Our technicians and engineers attend to all faults and related queries to ensure customer satisfaction.

**TRAINING SUPPORT-** We ensure that our end users are sufficiently trained and competent to operate our equipment because we understand the sensitivity of safety in the workplace.

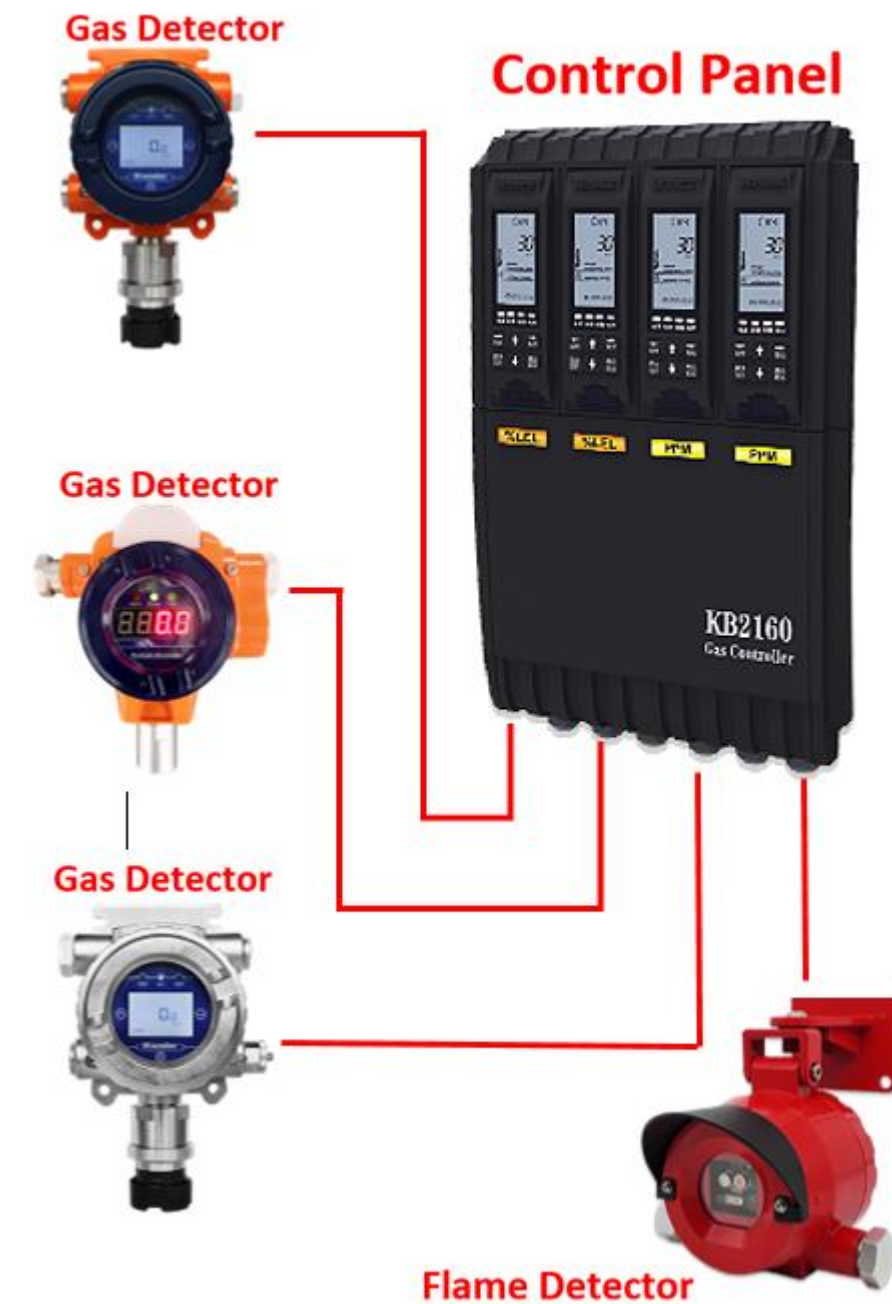
**SYSTEMS INTEGRATION-** For our IT based systems, our team of technicians and engineers perform complete systems integration to ensure that our systems are efficiently interlinked and can be managed and monitored remotely.

**THE SAFETY OF THINGS-** With the world now widely integrated through the internet medium, we strive to link all of our Safety Systems via IoT to allow for smart management and integration in to one command-centric and real time network.

# PRODUCTS – Gas Detection Systems

Gas Detectors estimate and monitor the concentration of one or more gases present in the atmosphere. They measure the risk of exposure and toxicity, as well as a lack of or excessive amount of oxygen.

- Single Gas Detector
- 4- Gas Detector
- 6- Gas Detector
- LPG/Cooking Gas Detector



# PRODUCTS – Air Quality & Noise Monitoring

Environmental monitoring instruments are used to measure various parameters in the environment to assess quality, pollution levels, and overall environmental conditions. These instruments are crucial for monitoring air quality, water quality, noise levels, and other factors that impact the environment and human health.

- Sound/ Noise Level Meter
- Luxmeter/ Light Intensity
- Temperature & Humidity
- Anemometer/ Air Velocity
- Radiation Survey Meter
- Lightning Detector
- Heat-stroke Meter
- CO2 & CO Detector
- Thermal Imaging Camera



# PRODUCTS – Air Quality Analysers

The gas analyser is a data collector which can quickly acquire and analyse gas concentration components in working environments where there are gas emissions. Four different versions to support different applications

- \*Monitoring gases in the ambient environment.
- \*Air quality gas analyser to monitor gases, particle counter, dew point, temperature and humidity.
- \*Odour gas analyser to monitor H<sub>2</sub>S, NH<sub>3</sub>, odour.
- \*Emission gas analyser to monitor high-concentration gases in flue gas environment.

## Product Features

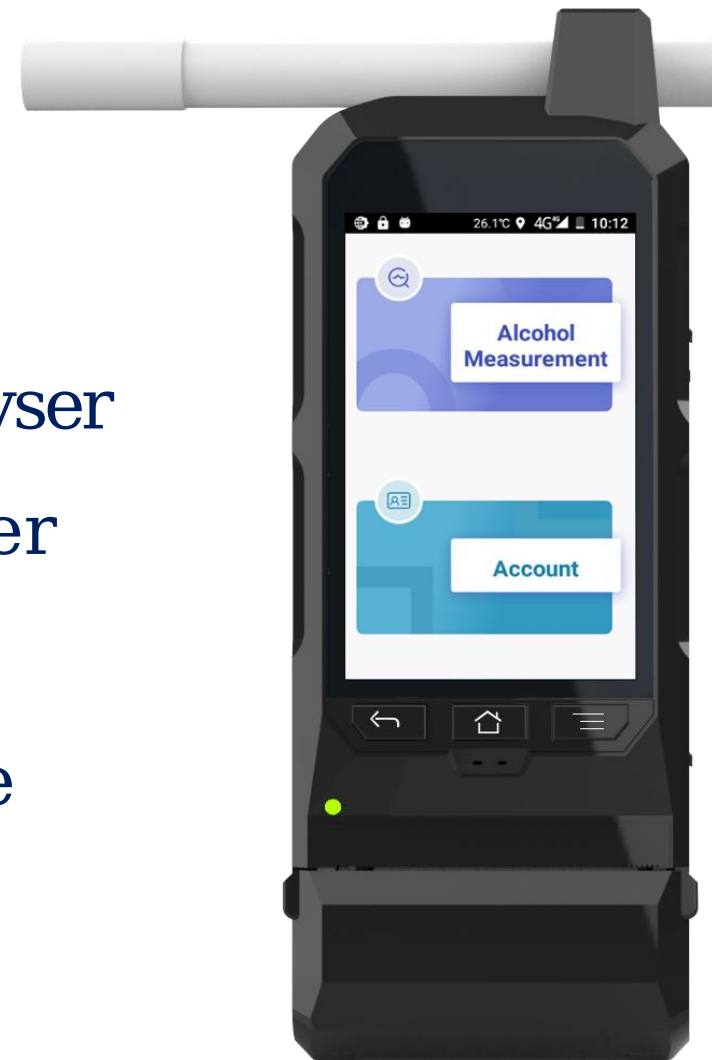
- Support to monitor 1-18 gas types
- 3.5-inch colour LCD display supports both real-time data and charts, user-friendly
- Built-in pump gas sampling, faster response
- Equipped with multi-layer filtering, protect sensor from oil, water vapour, dust
- Standard 32G SD memory card to store and export data by U-disk easily
- Support Lora and other wireless communication (Optional)
- Support built-in printer for real-time data printing (Optional)
- High temperature, high humidity environment measurement (Optional)



# PRODUCTS – Alcohol Breathalysers

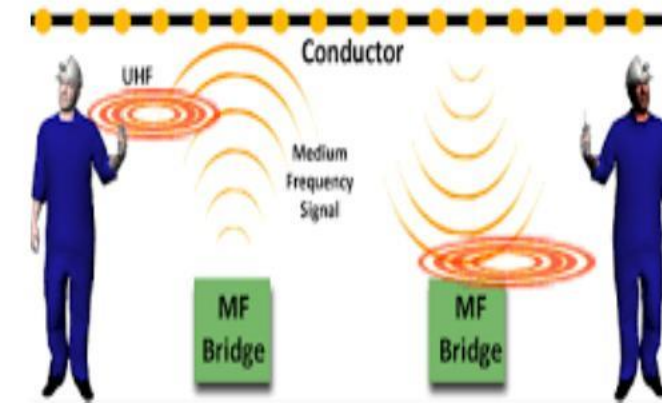
We offer a range of alcohol breathalyzers designed for workplace use. Our devices are equipped to conduct tests, print results, and integrate with PCs for secure record-keeping, enhancing safety and compliance efforts

- Front-line Breathalyser
- Wall-Mounted Breathalyser
- Evidential Breathalyser
- Personal Breathalyser
- Drug Testing Machine



# PRODUCTS – Underground Mining Equipment

- Refuge Chamber
- UG Loo/ Toilet
- Respiratory Equipment
- Radiation Area Monitoring
- Proximity Geo-Location
- UG Construction Equip
- UG Railway Safety Equip.
- UG Supporting Equip.
- UG Lifting & Extraction
- UG Air Ventilation
- Brattice Curtains



# Equipment Calibration



SS Controls further Calibrates Gas Detection Systems & Pressure Valves, Sound- Level Meters, Lighting Devices, Environment Meters, Thermometers, Airflow & Alcohol Breathalysers





SS Controls carries a warranty of 12 months on all machines with an extended maintenance plan.



We offer a scheduled Equipment Service & Maintenance on all products.



Calibration is provided periodically for all monitoring instruments.

# THE AFTER-SALES PROMISE



# CONTACT US!



Plot 17973 HamtsukunuRd, Gaborone West Industrial

+267 311 1937



SS Controls Botswana



sscontrols\_bw



info@sscontrols.co.bw



+267 7370 3030

[www.sscontrols.co.bw](http://www.sscontrols.co.bw)